

WashPlus

Washer-extractors with
Profitronic M controls



WashPlus

Washer-extractors with Profitronic M controls

Forever better

Miele is the epitome of quality. For more than 110 years, Miele has subscribed to a corporate philosophy of being 'forever better': A quality promise that stands for perfect laundry-care solutions. All Miele products are designed and manufactured to exacting quality standards. Washer-extractors are a prime example of the consistent use of innovative technology and clearly underline Miele's role as technology leader. Miele laundry machines offer considerable user benefits with respect to economic operation and reliability. All features strictly comply with the requirements of commercial laundry care.



WashPlus

With the new Profitronic M washer-extractors, Miele Professional is now raising the benchmark once again for gentle and economic laundry care.

Washer-extractors play an exceedingly important role in the laundry process and set the scene for subsequent stages, including drying, ironing and finishing. Load capacities range from 10 to 32 kg of laundry. Miele washer-extractors offer all types of users powerful machines for efficient and gentle laundry care – from small laundries in hotels and restaurants and large full-service on-premise laundries in hospitals and care centres to batch washers in commercial laundries. WashPlus stands for innovative product features, a responsible approach to natural resources, ergonomic processes and the dependability which comes from a strong brand.

Safe according to Machinery Guideline

The new Machinery Guideline (2006/42/EG) defines comprehensive safety regulations for commercial machines. The aim is to take the high risk potential of commercial machines into account and in particular to ensure that operating personnel is properly protected during daily work. This is done, for example, by using double-glazed machine doors as standard to prevent exposure to hot surfaces.

All washer-extractors from the Profitronic M series meet the provisions of this guideline in full.

COMPLIANT
WITH MACHINERY
GUIDELINE
2006/42/EC



WashPlus

+volumeplus

A capacity that defines its size.

- Drum volumes of 100 to 320 l for load capacities of 10 to 32 kg

+careplus

A system that provides gentle laundry care.

- Patented honeycomb drum
- Stability of shape and longer textile life cycle
- Specific process technology

+powerplus

A performance that offers more.

- Powerful heaters for short wash cycles
- High spin speeds result in low residual moisture of down to 46%
- Particularly quiet despite high-speed spinning
- Durable stainless steel
- Temperature fidelity and high cleaning performance for dependable results
- Proven process security through operating data acquisition system

+ecoplus

A sustainable, cost-effective performance.

- Particularly economic programmes for items with a light or regular soil
- Automatic weighing system for high process security and effective cost savings
- Simple dispensing using up to 12 dispenser pumps
- Robust design using high-quality, 90% recyclable materials for maximum sustainability

+flexplus

A process that adapts to all situations.

- Freely programmable controls to cater for individual customer requirements
- Intelligent controls supporting updates and remote service
- Standard programme configuration meets majority of user requirements

+comfortplus

A simple, user-friendly solution.

- Simple and fast programme selection using rotary switches and pushbuttons
- Progress indicated in display
- Large drum opening for simple loading and unloading
- Simple dispensing of detergent from front

+formplus

A concept that leaves a lasting impression.

- Product design for perfect ergonomics, user convenience and quality
- Stainless-steel machine front – professional and easy to clean

+brandplus

A strong brand. Made in Germany.

- High self-build content on all products
- Wide range of services including pre-sales advice, planning, training, economic feasibility studies, financing through to after-sales service
- Extensive quality tests



Broad range of applications to meet widely varying requirements

Customised laundry care to meet needs of specific audiences

In order to meet the needs of a broad range of applications, various aspects relating to controls and features together with tailored wash programmes play a role in achieving the following:

- Thorough cleaning
- Gentle treatment of textiles
- Short programmes

The chart shows examples of technical features and specific programmes available as part of the comprehensive response provided by these washer-extractors to various applications.

Application	Situation/Requirements	User benefits
Commercial laundries	<ul style="list-style-type: none"> • Various laundry loads and types of textiles 	<ul style="list-style-type: none"> • Freely programmable controls • Connection for up to 12 dispenser pumps • Special programmes: Wet cleaning (WetCare) for sensitive outerwear, bedding, reproofing
Rapid programme	<ul style="list-style-type: none"> • Slightly soiled laundry, e.g. some workwear • Washing new items before first use 	<ul style="list-style-type: none"> • Eco programme • Short programme duration • Low consumption
Hotels/ Catering businesses	<ul style="list-style-type: none"> • Thoroughly but gently cleaned textiles as the hallmark of high-class hospitality • Bulky textiles 	<ul style="list-style-type: none"> • Honeycomb drum • Large drum volumes • Special programmes: Duvets, spa and sauna laundry, kitchen linen, table linen, curtains
Wellness	<ul style="list-style-type: none"> • Well laundered textiles • Thorough removal of oils, grease and ointments • Soft towelling 	<ul style="list-style-type: none"> • Honeycomb drum • Large drum volumes • Short programmes for fast laundry turnaround and reduced inventory
Care homes	<ul style="list-style-type: none"> • Short cycles even in disinfection programmes • Disinfection temperatures maintained 	<ul style="list-style-type: none"> • 3 high-performance heater elements • Proven process security thanks to integrated data recording system • Special programmes: Thermal and chemo-thermal disinfection at 40°C, 60°C and 90°C
Clean machine	<ul style="list-style-type: none"> • Machine cleaning and sanitisation 	<ul style="list-style-type: none"> • Thorough cleaning of machine and internal pipework
Contract cleaners	<ul style="list-style-type: none"> • Heavily soiled textiles and items with a tendency to lint • Safe, reproducible reprocessing and disinfection of mops • Reprocessing and reproofing of cleaning cloths • Reprocessing efficiency 	<ul style="list-style-type: none"> • Large dump valve • Cantilever heater elements • Reprocessing and reproofing of mops and cleaning cloths in a single programme cycle • Special programmes: Mops, cloths, door mats, pads
Emergency services/ Fire service	<ul style="list-style-type: none"> • Heavily soiled and often contaminated workwear • Bulky textiles 	<ul style="list-style-type: none"> • Large drum volumes • Special programmes: Reproofing, breathing masks, fire-fighting apparel
Dry cleaners	<ul style="list-style-type: none"> • Thorough but gently cleaned textiles/outerwear 	<ul style="list-style-type: none"> • Honeycomb drum • Large drum volumes • Special programmes: Wet cleaning (WetCare) for sensitive outerwear, bedding, reproofing
Riding stables	<ul style="list-style-type: none"> • Heavily soiled textiles and items with a tendency to lint • Bulky horse blankets 	<ul style="list-style-type: none"> • Large dump valve • Cantilever heater elements • Large drum volumes • Special programme: Horse blankets
Sportswear	<ul style="list-style-type: none"> • Large laundry loads, in part heavily soiled • Sportswear made from polyester and polyamide and items containing breathable membranes 	<ul style="list-style-type: none"> • Large drum volumes • Special programmes to retain breathability and wicking action of membranes
Sluice	<ul style="list-style-type: none"> • Washing of laundry at temperatures and holding times as prescribed by Department of Health NHS guideline (HSG (95)18) 	<ul style="list-style-type: none"> • Modified process technology • Ideal cycle durations



Tailored application technology for excellent wash results

Always perfectly matching process technology

The widely different needs of target laundry-care markets require tailored solutions to achieve perfect washing and disinfection results. To achieve this, Miele Professional relies on customised process technology, i.e. wash programmes tailored to the specific needs of target audiences.



Avoidance of load imbalances

Continuous readings taken during the entire spin cycle minimise the risk of imbalanced loads, even at high spin speeds:

- Optimum residual moisture levels
- Consistently good spin results at all spin speeds
- Extension of machine life cycle through reduced mechanical strain
- Perfect preparation for finishing process

Optimum distribution of laundry within drum

Good distribution of the laundry load, particularly when washing bulky items, is vital in achieving top-class wash results. A special spin profile prevents both load imbalances and stops items becoming plastered to the body of the drum. This guarantees gentle fabric care even with a fully loaded drum.

Gentle treatment of non-permeable textiles

The risk of pockets of water being trapped inside the load is particularly high with non-permeable textiles. In order to prevent this and achieve optimum wash results, Miele uses an intermittent spin cycle carefully geared to the textiles in question.



Impeccable results on Turkish towelling

The use of various oils and ointments leaving behind characteristic stains is typical of the soiling on spa towelling. A special wash cycle profile and temperatures designed for the use of additional bleaching agents ensures the thorough removal of oily substances and makes for spotless wash results.

Deflation of duvets and feather beds

In order to achieve perfect results in reprocessing bulky duvets and pillows, items must be first deflated using special process technology. This is the prerequisite for wetting of duvets and pillows fast.

Perfect disinfection

Safe disinfection is required when reprocessing laundry in hospitals and care homes. Special programmes for the washing and disinfecting of soiled laundry to meet HSG (95) 18 and the Care Standard Act 2000.



Best results on mops

Heavily soiled and wet mops require special attention. In a customised programme, mops are spun at the very beginning of the cycle in order to minimise the carryover of soil into the wash cycle as such. This process ensures best possible cleaning performance combined with gentle fabric care.

Impregnation of mops and cleaning cloths

Mops and cleaning cloths are impregnated after washing with the requisite detergents and disinfectants to facilitate immediate re-use. This process ensures a rapid turnaround, improves surface cleaning performance and, compared to manual reprocessing, results in significant time savings.



Profitronic M controls

Greater flexibility for more options



+flexplus

A process that adapts to all situations.

Miele programme controls

Profitronic M is an innovation originating from Miele's own electronics plant.

These sophisticated, high-end controls are not purchased 'off the shelf' but are meticulously designed to meet the most stringent demands.

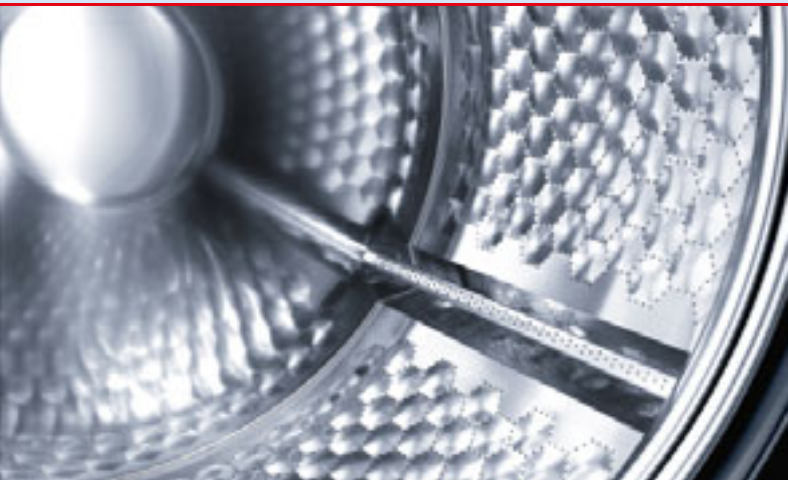
- Freely programmable controls
- 199 programme slots
- Pre-defined programmes as standard
- 11 languages
- User interface with plain text

One particular benefit of freely programmable controls are their ability to accommodate and enable customisation. Even special laundry-care requirements can be met with ease. It is also possible to modify existing programmes.

Interfaces, connections

- Optical interface for service diagnosis and programme updates
- 7-pole interface for payment systems
- RS 232 interface
- Remote service with diagnosis, updates and programming via RS 232 interface
- 6 dispensing signals with signal for empty container
- Chipcard reader to upload programmes

Patented honeycomb drum, perfect textile care



+careplus

A system that provides gentle laundry care.

Superbly gentle laundry care

The unique interplay of efficient wash-cycle parameters and Miele's patented honeycomb drum ensures a thorough wash combined with reduced strain on fabrics. Even at very high spin speeds, no hole impressions are left on laundry and the load peels away from the walls easily and falls into a loose heap in the drum. Furthermore, polished and shouldered holes in the body of the drum prevent laddering of delicate fabrics.

- Optimum protection of laundry
- No hole impressions on laundry
- Laundry peels away from drum walls easily
- Long-lasting laundry
- Reduced investment in new textiles
- Minimal laundry costs

Scientific proof of Miele's gentle laundry care is furnished by the Institute for Applied Research in Krefeld, Germany:

- Textiles washed much more gently
- Stability of shape and longer life cycle through gentle treatment
- The woollens programme is as gentle as washing by hand

Optimum cleaning

"Experiments confirm that the honeycomb drum is identical in performance relating to the removal of coarse soil and heavy linting to the standard drum (with larger perforations)."



Special WetCare programmes

Washing outerwear made from delicate fabrics, synthetics and high-performance fibres in an aqueous solution has become an integral part of modern laundry care – not least because around 90% of garments nowadays can be subjected to the wet-cleaning process. WetCare, an aqueous wash system developed by Miele, meets the most demanding of requirements, produces top-class wash results and offers unbeatable benefits compared with dry cleaning:

- Garments smell pleasantly fresh
- Textiles have bounce and are pleasant to the skin
- Water-soluble soils perfectly removed
- The WetCare system is very environmentally friendly



Low consumption, low costs, high-level convenience



ecoplus

A sustainable, cost-effective performance.

Economical and environmental aspects

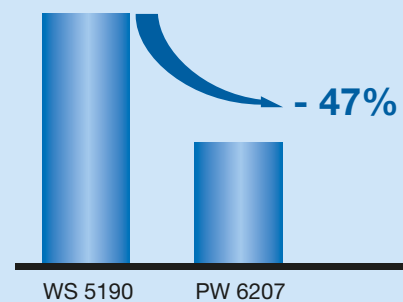
Miele laundry machines have set standards in all load-size categories with respect to low consumption and fast programme cycles. Profitronic M washer-extractors now take financial savings and environmental concerns onto the next level.

- 40% lower energy consumption¹
- 47% lower water consumption¹
- 21% higher g factor and 6% lower residual moisture¹

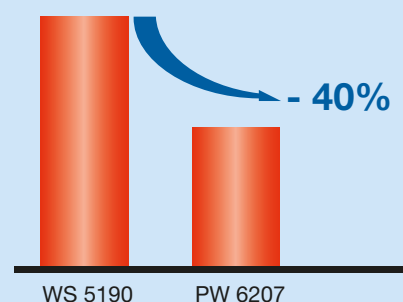
Efficiency

- High performance combined with low consumption
- Connections for use of hot and cold water
- Large, hydraulically controlled dump valve (DN 70) for short cycle times and enhanced reliability

Specific water consumption (l/kg)



Specific energy consumption (kWh/kg)



Eco programme

The new Eco programme gets by with even less water and electricity. Compared with the standard Cottons 60°C programme, operating cost savings in the order of up to 46% are possible.

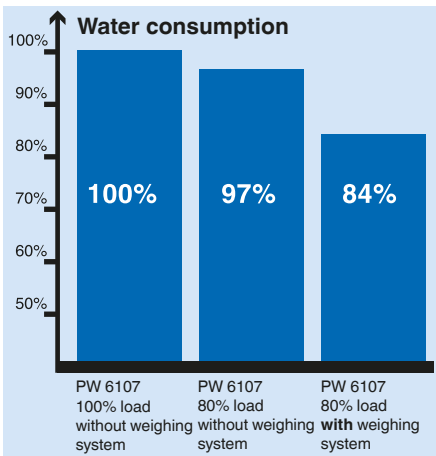
This programme featuring a considerably shortened cycle time and reduced wash temperatures is ideal for slightly soiled loads and for washing new textiles prior to first use.

Convenience

- Additional connection for raw water (depending on model)
- Large detergent dispenser in machine front with removable scoops
- Large porthole and door opening angle of 180° for simple loading and unloading
- Very low sound emissions thanks to the use of high-quality materials and superb workmanship

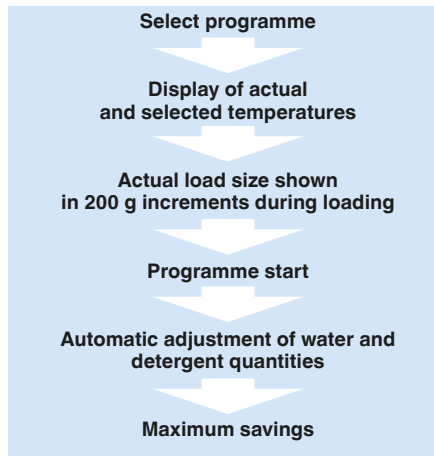
¹ Comparison of Miele's WS 5190 washing machine (19 kg load capacity) and Miele's PW 6207 washer-extractor (20 kg load capacity) in Cottons 60°C programme, hot water fill

Up to 16% lower water consumption thanks to weighing system



Weighing system

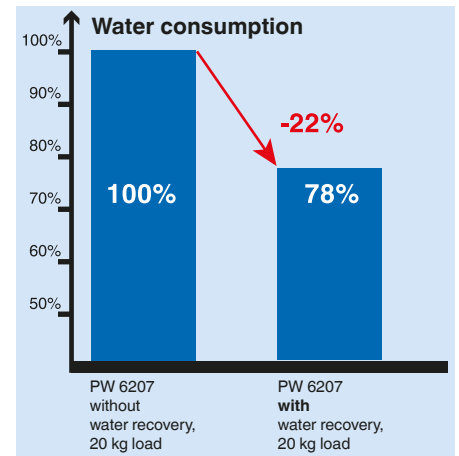
In daily use, it is not always possible to fully load machines and in some cases it does not even make good sense. In such cases, an optional weighing system offers considerable benefits. Depending on the load size, only the amount of water, energy and detergent required by less-than-full loads is used.



Maximum savings

For optimum results and in the interests of maximising detergent savings, these machines can be optionally connected to a liquid dispensing system. In combination with the weighing system, detergent is dispensed automatically without any manual intervention on the part of the launderer.

Up to 22% lower water consumption thanks to water recovery module



Water recycling

A water recovery module significantly reduces water consumption. This is done by pumping the water from the last rinse cycle into a water tank for use in the next pre-wash. Water recovery therefore represents a huge contribution towards the good husbandry of valuable resources.

Automatic liquid detergent offers great potential savings



Liquid dispensing

Connections for up to 12 chemicals are provided as standard for the simple and economic dispensing of detergent. Dispensing volumes are selected simply and directly at the Profitronic M controls. A prompt appears in the display as soon as a container becomes empty. Liquid dispensing therefore ensures high-level process security and offers cost-cutting opportunities by virtue of precise dispensing:

- Precise dispensing of detergents
- Avoidance of over- and underdosing
- Scientific evidence for considerable savings in comparison to manual dispensing
- Simple handling – once set, dispensing is automatic
- Clean and tidy - detergent no longer needs to be handled manually

Washer-extractors

Load capacity 10-32 kg

Profitronic M controls



PW 6107 washer-extractor

- Load capacity (1:10) 10 kg
- Honeycomb drum, drum volume 100 l
- Max. spin speed 1200 rpm
- g factor 475
- Residual moisture 47%
- WRAS approved

PW 6137 washer-extractor

- Load capacity (1:10) 13 kg
- Honeycomb drum, drum volume 130 l
- Max. spin speed 1100 rpm
- g factor 400
- Residual moisture 47%
- WRAS approved



PW 6167 washer-extractor

- Load capacity (1:10) 16 kg
- Honeycomb drum, drum volume 160 l
- Max. spin speed 1150 rpm
- g factor 500
- Residual moisture 46%
- WRAS approved

PW 6207 washer-extractor

- Load capacity (1:10) 20 kg
- Honeycomb drum, drum volume 200 l
- Max. spin speed 1100 rpm
- g factor 460
- Residual moisture 47%
- WRAS approved



PW 6241 washer-extractor

- Load capacity (1:10) 24 kg
- Honeycomb drum, drum volume 240 l
- Max. spin speed 1100 rpm
- g factor 542
- Residual moisture 46%

PW 6321 washer-extractor

- Load capacity (1:10) 32 kg
- Honeycomb drum, drum volume 320 l
- Max. spin speed 1000 rpm
- g factor 448
- Residual moisture 50%

Exclusive to
MIELE

- Freely programmable Profitronic M controls
- Patented honeycomb drum
- Heating with most efficient source of energy: Electric, gas or steam (direct/indirect)
- Proverbial Miele quality – 'Made in Germany'



Quality – 'Made in Germany'



+brandplus

A strong brand. Made in Germany.

Choice materials and top-notch workmanship guarantees smooth running properties, low sound emissions and a highly durable product. All Miele laundry machines are subjected to intense scrutiny in quality tests to ensure the satisfaction of users.

- Designed, built and tested to last 30,000 operating hours (more than 17 years based on 8 hours per day and 220 working days per year)
- 60,000-cycle door system endurance test (opening/closing/locking/unlocking)
- 30,000-cycle detergent dispenser flap test (opening/closing)
- 100,000 operations of On/Off switch
- 1000-hour wash test at 60°C and 95°C with varying loads
- 10,000-hour circuit board test under extreme load conditions
- 30,000-hour non-stop endurance test of fan cooling electronic components
- Extreme test regime covering drum assembly, suspension springs and motor and drive system

Each and every machine is subjected to an end-of-line test prior to shipment. The results of this inspection are archived and include the following:

- Earth conductor continuity test
- Imbalance test
- High-voltage test
- Water and heating type check

A washer-extractor is only approved for shipment once these tests have been passed with flying colours.

Multiple awards

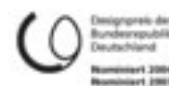
The quality and dependability of Miele machines has been confirmed in numerous tests. This is no doubt one of the reasons why Miele has been voted best and most trusted brand - as endorsed by many awards.



+formplus

A concept that leaves a lasting impression.

Miele makes efficient processes and perfect laundry care available to all target groups. Numerous innovations and patented solutions originate in Miele's own research and development department. This results in benefits endorsed by highly coveted design prizes.



Precise data acquisition, high-level process security



+comfortplus

A simple, user-friendly solution.

Machine data acquisition is gaining significance. Harvesting key machine data is the key to process security and economic feasibility.

Operating data acquisition

A module to collect operating data is a standard feature on all Profitronic M washer-extractors. This unit saves data from the last 300 programme cycles. This information can be called up from the Profitronic M controls via the display. Data logging and recording starts as soon as use of the washer-extractor commences.

Superordinate data

- e.g. installation site, operator, date and machine no.

Machine data

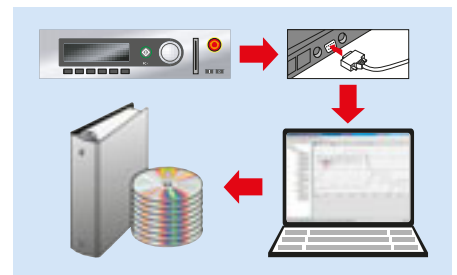
- e.g. operating hour count

General programme data

- e.g. programme name, start and finish times

Specific programme data

- e.g. consumption data, temperatures, programme block times, dispensing



Use of operating data

Specially compiled software (IBH) offers additional user convenience when evaluating and archiving data. Data can be transferred to a PC for further processing using an optional RS 232 interface. This simple approach and software solution enables large data volumes to be processed, visualised and archived on a PC or laptop. Process data can be displayed, edited and saved in charts or tables. Data can be exported to other programs, for example Microsoft Excel, with ease.

Accessories



Liquid dispensing

The dispensing system consists of various components. These include the DOS-S dispenser rack, the DOS-G2 dispenser housing unit, the DOS-P2 dispenser pump and the DOS-R non-return valve. The DOS-GP3 dispenser unit already includes the DOS housing unit and 3 DOS pumps.



Fluff filter unit



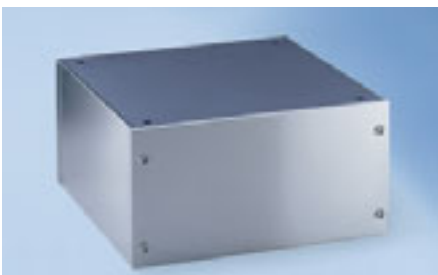
Coin mechanism



Chipcard controls



Communication module with RS 232 interface



Plinths

160, 250 or 320 mm plinths* are available to bring the height of a washer-extractor onto a level with a tumble dryer and to ensure ergonomic processes.

* Available as box or open plinths

BM 02	Protective bag for breathing masks
BS 01	Protective bags for horse blanket buckles
BSH	Raw water valve for PW 6107 – PW 6207
BSS	Peak-load negotiation
BWS	Conversion kit – Steam and foam discharge
CKSL	Chipcard key
CKSP	Chipcard for data storage (3 off)
DOS G2	Pump housing unit
DOS GP3	Pump housing unit
DOS P2	Dispenser pump with hose and siphon for DOS G2
DOS R	Non-return valve
DOS S	Dispenser pump rack
ELD	Electrically operated steam valve
C 4060	Single-machine coin mechanism for tokens
C 4065	Single-machine coin mechanism for 20p and £1 coins
PND	Pneumatic steam valve
FFK	Fluff filter unit
FRZ	Flow meter
MF	Multifunction module
XKM	Communication module
WRG 02	Water recycling
WKS 4101	Wall bracket for coin mechanisms C 4060 and C 4065

Technical data

Washer-extractors	PW 6107	PW 6137	PW 6167	PW 6207
Load capacity [kg]	10	13	16	20
Honeycomb drum, drum volume [l]	100	130	160	200
Spin speed [max. rpm]	1200	1100	1150	1100
g-factor	475	400	500	460
Residual moisture [%]	47	47	46	47
Controls, programmes				
Profitronic M, freely programmable	•	•	•	•
Water connections				
2 x cold water, 1/2" with 3/4" threaded union	•	•	•	•
1 x hot water, 1/2" with 3/4" threaded union	•	•	•	•
1 x raw water, 1/2" with 3/4" threaded union	o	o	o	o
Dump valve	DN 70	DN 70	DN 70	DN 70
Drive, electrical connection (electric heating)				
Three-phase asynchronous motor with frequency converter	•	•	•	•
3N AC 380-415 V 50-60 Hz	•	•	•	•
Heating [kW]	9	15	15	18
Total rated load [kW]	11	17	18	21
Fuse rating [A]	3 x 16	3 x 25	3 x 25	3 x 35
Heating options				
Electric (EL), Gas (G), Steam (HP, LP)*	•	•	•	•
Dispenser systems				
4-compartment dispenser in machine front	•	•	•	•
Gas-heated machines pre-equipped for liquid dispensing (MF 04)	•	•	•	•
Connection options				
Dispenser for liquid detergents	o	o	o	o
Peak-load negotiation	o	o	o	o
Energy management	o	o	o	o
Payment system	o	o	o	o
Serial interface RS 232	o	o	o	o
External stop signal	o	o	o	o
Water recycling	o	o	o	o
Dimensions, weight (electric heating)				
External dimensions H / W / D [mm]	1250/804/925	1250/804/1005	1400/924/1007	1400/924/1140
Weight [kg]	324	342	454	495
Outer casing				
Sides and lid in Octoblue**	•	•	•	•
Rear panel galvanised, front stainless steel	•	•	•	•

* Steam valve not standard

** Stove-finished

• = Standard, o = Optional

Washer-extractors	PW 6241	PW 6321
Load capacity [kg]	24	32
Honeycomb drum, drum volume [l]	240	320
Spin speed [max. rpm]	1100	1000
g-factor	542	448
Residual moisture [%]	46	50
Controls, programmes		
Profitronic M, freely programmable	•	•
Water connections		
1 x cold water, ¾" with 1" threaded union	•	•
1 x hot water, ¾" with 1" threaded union	•	•
1 x raw water, ¾" with 1" threaded union	•	•
Dump valve	DN 70	DN 70
Drive, electrical connection (electric heating)		
Three-phase asynchronous motor with frequency converter	•	•
3N AC 380-415 V 50-60 Hz	•	•
Heating [kW]	24	30
Total rated load [kW]	25	31
Fuse rating [A]	3 x 50	3 x 63
Heating options		
Electric (EL), Gas (G), Steam (HP, LP)*	•	•
Dispenser systems		
5-compartment dispenser in machine front	•	•
Gas-heated machines pre-equipped for liquid dispensing (MF 04)	•	•
Connection options		
Dispenser for liquid detergents	o	o
Peak-load negotiation	o	o
Energy management	o	o
Serial interface RS 232	o	o
External stop signal	o	o
Water recycling	o	o
Dimensions, weight (electric heating)		
External dimensions H / W / D [mm]	1640/1085/1225	1640/1085/1272
Weight [kg]	640	648
Outer casing		
Sides and lid in Octoblue**	•	•
Rear panel galvanised, front stainless steel	•	•

* Steam valve not standard

** Stove-finished

• = Standard, o = Optional

Miele Co. Ltd.
Fairacres
Marcham Road, Abingdon
Oxon OX14 1TW

Tel 0845 330 3618

miele-professional@miele.co.uk

Miele worldwide:

AUSTRALIA

Miele Australia Pty. Ltd.
1 Gilbert Park Drive
Knoxfield, VIC, 3180
Tel. +61(0)3/97 64 71 30
Telefax +61(0)3/97 64 71 49

AUSTRIA

Miele Gesellschaft mbH.
Mielestraße 1
5071 Wals/Salzburg
Tel. +43(0)50 800 420
Telefax +43(0)50 800-81 429

BELGIUM

N.V. Miele S.A.
z.5 Mollem 480
Hof te Bollebeeklaan 9
1730 Mollem
Tel. +32(0)2/451 14 11
Telefax +32(0)2/451 14 14

CANADA

Miele Limited
161 Four Valley Drive
Vaughan, ON L4K 4V8
Tel. (905) 660-9936
Telefax (905) 532-2290

CHILE

Miele Ltda.
Av. Vitacura 3285
Vitacura
Santiago de Chile
Tel. +56 2 798-9000
Telefax +56 2 798-9049

CHINA

Miele Beijing Rep. Office
3W Suite 512, Oriental Plaza,
1 East Chang An Avenue
Dong Cheng District
Beijing 100738, P.R. China
Tel. +86 10 85151919
Telefax +86 10 85181797

Miele Shanghai

Suite 1102, United Plaza
1468 Nanjing Road West
200040 Shanghai, P.R. China
Tel. +86 21 62884200
Telefax +86 21 62884100

CROATIA

Miele d.o.o.
Buzinski prilaz 32
10000 Zagreb
Tel. +385/1/66 89 000
Telefax +385/1/66 89 090

CZECH REPUBLIC

Miele spol. s.r.o.
Hněvkovského 81B
61700 Brno
Tel. +420(0)5 4 35 53-1 11
Telefax +420(0)5 4 35 53-1 19

DENMARK

Miele A/S
2600 Glostrup, Erhvervsvej 2
Tel. +45 43 27 11 00
Tel. Salg/Professional
+45 43 27 15 00
Tel. Jylland +45 97 12 70 66
Telefax hovednr. +45 43 27 11 09
Telefax Salg/Professional
+45 43 27 15 09

FINLAND

Miele Oy
Porttikaari 6
01200 Vantaa
Tel. +358(0)9 87 59 70
Telefax +358(0)9 87 59 72 99

FRANCE

Miele S.A.S.
9 avenue Albert Einstein
93151-Le Blanc-Mesnil (Paris)
Tel. +33(0)1/49 39 34 44
Telefax +33(0)1/49 39 44 38

GERMANY

Miele & Cie. KG
Carl-Miele-Straße 29
33332 Gütersloh
Tel. 0 180 220 21 21 (6 ct)*
Telefax 0 800 225 57 55
*Only in Germany

GREAT BRITAIN

Miele Co. Ltd.
Fairacres
Marcham Road, Abingdon
Oxon OX14 1TW
Tel. +44 (0) 845 330 3618
Telefax +44 (0) 1235 405 636

GREECE

Miele Hellas E.P.E.
Mesogion 257
154 51 N. Psychiko-Athen
Tel. national 01/10 6 79 44 44
international 00 30/2/10 6 79 44 44
Telefax 01/10 6 79 42 09
international 00 30/2/10 6 79 42 09

HUNGARY

Miele Kft.
Alsó Törökúti út 2.
1022 Budapest
Tel. +36 (06) 1 8806-400
Telefax +36 (0) 1 8006-402

HONG KONG

Miele (Hong Kong) Ltd.
41/F - 4101
Manhattan Place,
23 Wang Tai Road,
Kowloon Bay,
Hong Kong
Tel. +852/2610 1331
Telefax +852/2610 1013

INDIA

Miele Appliances India Pvt. Ltd.
Ground Floor,
Copia Corporate Suites,
Commercial Plot No. 9, Jasola,
New Delhi - 110025
Tel. +91 (0) 11 469000-00
Telefax +91 (0) 11 469000-01

IRELAND

Miele Ireland Ltd.
2024 Bianconi Avenue
Citywest Business Campus
Tel. +353(0)1/461 07 10
Telefax +353(0)1/461 07-97

ITALY

Miele Italia S.r.l.
Strada di Circonvallazione, 27
39057 S. Michele-Appiano (BZ)
Tel. +39 04 71/66 61 11
Telefax +39 04 71/66 63 50

JAPAN

Miele Japan Corp.
E Space Tower 11F
3-6 Maruyamacho
Shibuya-ku Tokyo
150-0044 Japan
Tel. +81(3)5784-0030
Telefax +81(3)5784-0035

KAZAKHSTAN

Miele LLP
Building 1B (office 602)
Al-Farabi Pr. 13
050059 Almaty
Tel. +7 727 3111141
Telefax +7 727 3111042

KOREA

Miele Korea Limited
Miele Haus, 607-10 Yeoksam-dong
Gangnam-gu
Seoul 135-080
Tel. +82 2 3451 9353
Telefax +82 2 3451 9399

LATVIA

Miele SIA
Kr. Valdemāra 21-621
1010 RIGA
Tel. +371 6 7035232
Telefax +371 6 7035252

LUXEMBOURG

Miele s.à r.l.
20, Rue Christophe Plantin
2339 Luxembourg
Tel. +352/4 97 11-25
Telefax +352/4 97 11-39

MEXICO

Miele S.A. de C.V.
Av. Santa Fé 170
German Centre 0-4-2
Col. Lomas de Santa Fé
C.P. 01210 México, D.F.
Tel. +52/55 85 03 98 70
Telefax +52/55 85 03 98 74

NETHERLANDS

Miele Nederland B.V.
De Limiet 2
4131 NR Vianen
Tel. +31(0)3 47/37 88 83
Telefax +31(0)3 47/37 84 29

NEW ZEALAND

Miele New Zealand Ltd.
Unit L, 10-20 Sylvia Park Road
Mt. Wellington, 1060 Auckland
Tel. +64(0)9/573 1269
Telefax +64(0)9/573 1268

NORWAY

Miele AS
Løxaveien 13
1351 Rud
Tel. +47/67 17 31 00
Telefax +47/67 17 31 10

POLAND

Miele Sp. z. o. o.
ul. Gotarda 9
02-683 Warszawa
Tel. +48/022/5 48 40 00
Telefax +48/022/5 48 40 10

PORTUGAL

Miele Portuguesa, Lda.
Av. do Forte, 5
2790-073 Carnaxide
Tel. +351/21/42 48-100
Telefax +351/21/42 48-109

ROMANIA

Miele Appliances SRL
Intrarea Narciselor 8
OTOPENI
Jud. Ilfov
Tel. +40 21 3520777
Telefax +40 21 3520776

RUSSIA

000 Miele CIS
Leningradsky Prospekt, 39A
125167 Moscow
Tel. +7(8)495 745-8992
Telefax +7(8)495 745-8680

SERBIA

Miele d.o.o. Beograd
Palmoticeva 16A
BEOGRAD - Stari Grad 11000

SINGAPORE

Miele Pte. Ltd.
163 Penang Road #04-02/03
Winsland House II
Singapore 238463
Tel. +65/67 35 11 91
Telefax +65/67 35 11 61

SLOVAKIA

Miele spol. s. r. o.
Plynárenská 1
82109 Bratislava
Tel. +421/2/58 10 31 11
Telefax +421/2/58 10 31 19

SLOVENIA

Miele d.o.o.
Brnčičeva 41 g
1000 Ljubljana
Tel. +49(0)1563 44-80
Telefax +386 (0) 1563 44-90

SOUTH AFRICA

Miele SA (Pty) Ltd.
63 Peter Place
Bryanston 2194
Tel. +27(0)11/5 48-19 00
Telefax +27(0)11/5 48-19 35

SPAIN

Miele S.A.U.
Carretera de Fuencarral, 20
28108 Alcobendas (Madrid)
Tel. +34/91/6 23 20 00
Telefax +34/91/6 62 02 66

SWEDEN

Miele AB
Industrivägen 20
Box 1397
171 27 Solna
Tel. +46(0)8/5 62 29-000
Telefax +46(0)8/5 62 29-209

SWITZERLAND

Miele AG
Limmatstr. 4
8957 Spreitenbach
Tel. +41(0)56/4 17 20 00
Telefax +41(0)56/4 17-24 69

TURKEY

Miele Elektrikli Aletler
Diş. Tic. ve Paz. Ltd. Şti.
Güvercin Sokak No. 10
34330 Levent-Istanbul
Tel. +90/2 12/3 86-08 00
Telefax +90/2 12/3 25 84 49

UKRAINE

Miele LLC
Zhylyanskaya Str. 48, 50 A
01033 Kiev
Tel. +38 (8)044 4960300
Telefax +38 (8)044 4942285

UNITED ARAB EMIRATES

Miele Appliances Ltd.
Gold & Diamond Park
Sheikh Zayed Road
Building No. 6,
Offices Nos. 214-220
Dubai
Tel. +971 4 3418444
Telefax +971 4 3418852

USA

Miele, Inc.
9 Independence Way
Princeton, NJ 08540
Tel. 001-800/843 72 31
Telefax 001-609/419 42 41

OTHER COUNTRIES:

Sales International
Miele & Cie. KG
Carl-Miele-Straße 29
33332 Gütersloh
Tel. +49(0)52 41-89 15 07
Telefax +49(0)52 41-89 15 00